



# CENTRE-PIVOT WINDOW



## ISO E2

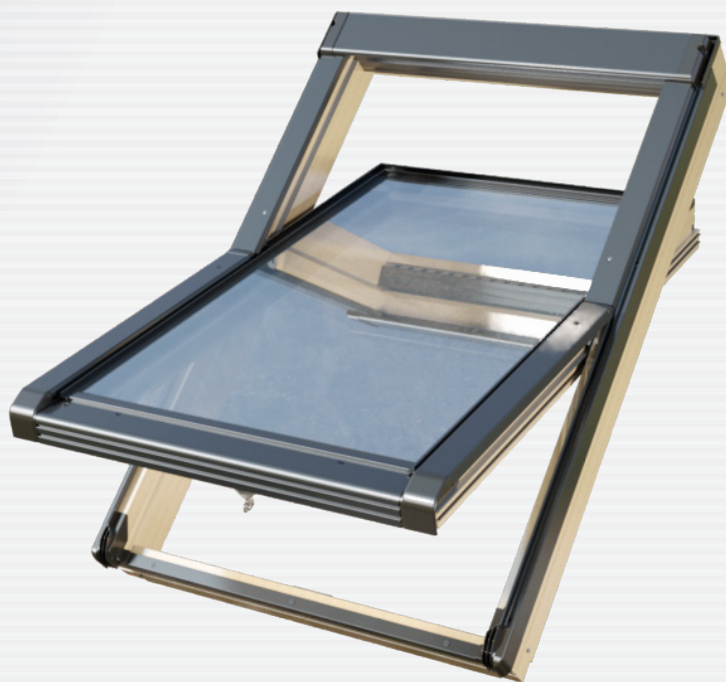
Uw = 1,2 W/m<sup>2</sup>K

Glazing:

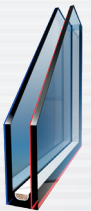
Ug = 1,0 W/m<sup>2</sup>K



warranty conditions set out in the warranty card available at [www.okpol.com](http://www.okpol.com)



DOUBLE GLAZED UNIT  
GAS - ARGON  
WARM SPACER  
LOW EMISSION COAT  
TOUGHENED PANE



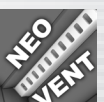
4 GASKETS



HANDLE WITH THE LOCK  
AND MICRO-VENTILATION  
(2 KEYS IN A SET)



NEO-VENT AIR INLET



IMPREGNATED PINE WOOD

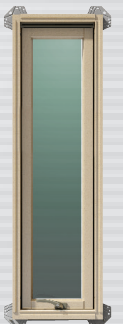


ROOF PITCH



NON-STANDARD SIZES  
55-134cm X 78-160cm

The non-standard orders are can be completed after a consultation with technical sales advisor or customer service office.



## WINDOW SIZES

glazing area [m <sup>2</sup> ]	01	02	03	04	05	06	07	08	09	10	11	12	13	14
0.20	0.29	0.38	0.45	0.47	0.56	0.70	0.71	0.92	0.94	1.16	0.88	0.85	1.07	
size symbol	01	02	03	04	05	06	07	08	09	10	11	12	13	14
window size: width x height [cm]	55x78	55x98	66x98	66x118	78x98	78x118	78x140	94x118	94x140	114x118	114x140	134x98	78x160	94x160